

Unlock IAQ control
– intelligently

AirImage 2.0 User Manual

– standard mode



Table of content

- About this manual4
- Glossary of symbols5
- Important safety information5
- Mounting6
- Technical information7
- Set-up8
- Link the first CamCleaner8
- Screen views9
- Settings10
- MyCamfilConnect portal11
- Maintenance12
- Troubleshooting12

- Guarantees and undertakings13
- Disclaimer of liability13
- Manufacturer’s declaration of conformity14

Version history:

Version	Revision date	Revision description
1.0	06/10/2025	First release

About this manual

This operator instruction manual is for Camfil's customers. It describes the functioning of the product and provides the most important information for safe use of the unit. All information provided in this operating manual refers to the current state of the product's development.

The documentation remains valid as long as the customer does not make any changes to the product. If the Airlmage 2.0 is used in a manner not specified by the manufacturer, the protection provided by the unit may be impaired. Read this manual carefully before installing and commissioning equipment.





Up-to-date operating instructions can also be downloaded from www.camfil.com.






The Airlmage 2.0 sensor system is an intelligent system for monitoring and controlling CamCleaners, providing indoor air quality smartly. It tracks and predicts optimal filter change frequency and based on measured indoor air quality, the Airlmage 2.0 regulates the fan speed as required, resulting in lower energy costs.

Glossary of symbols

Menu screens:

-  Get status updates on all connected devices, real-time environmental measurements, and a graph of historical PM 2.5 data. A 4G logo indicates a mobile connection with double arrows confirming connection to the cloud.
-  Connect CamCleaners, adjust their control mode, and click on them to view detailed unit and filter information.
-  Gain insights into historical PM 2.5 values, the harmful particles removed by your devices, and the clean air they delivered.
-  Pre-set the schedule and IAQ control settings, access Airlmage unit information, and adjust general settings like language, time zone, lock, or screen saver.

Control modes:

-  **Schedule:** Assign CamCleaners to a personalized schedule. Pre-set up to 3 different schedules in the settings.
-  **Fan Speed:** Choose a Fan Speed between 1 and 6.
-  **IAQ Control:** Set a maximum PM 2.5 value that your Air Quality can reach. The CamCleaner will automatically turn on when the level rises above.

Warning Messages:

- Filter message:** appears when the filter capacity is at 10% (yellow) or at zero (red).
- Fan error:** receive an error message in case the fan of one of the connected CamCleaners is not running properly. Find both on the **Home screen**, check **CamCleaner unit information** under device status for fan error details, and on the **CamCleaner Control screen** for exact remaining filter capacity.

Important safety information:

- Do not open the Airlmage 2.0 casing
- Only use the original power supply provided by Camfil
- Do not cover the inlets or outlets
- Use of equipment, components, and accessories other than those specified by Camfil may impair the safe operation of the equipment.
- The safe operation of the equipment as part of a larger system is the responsibility of the installer of the system.
- The Airlmage 2.0 is not waterproof. Exposing it to water or setting it in a pool of water can severely damage your Airlmage 2.0.
- DO NOT** mount the Airlmage 2.0 upside down. This will affect the functionality of the measurements
- Mount the Airlmage on an inside wall approximately 1.4 m (4-1/2 ft) from the floor (or in the specified location), to allow exposure to the average zone temperature. Avoid locations that are exposed to discharge air from registers or radiation from appliances, lights, or the sun
- Clean the Airlmage 2.0 carefully with a dry cloth, do not use liquid cleaners, aerosol cleaners or pressurized air to clean it.
- The Airlmage 2.0 is not intended for outdoor use.
- Before plugging the power adapter into a socket, check if power source, voltage and frequency corresponds to 100-240V and 50-60Hz. Current rating of power adapter is 0.6A.
- Do not use the equipment at altitudes exceeding 2,000 meters (6,560 feet).
- The maximum power consumption of the Airlmage 2.0 is 8W
- The supplied power adapter is rated to operate between 0 °C and +40 °C (32 °F to 104 °F), with humidity ranging from 20% to 85%

WEEE directive requires that old or defective electrical and electronic products must be disposed of in an environmentally sound way. The symbol means that your product should be collected separately from household waste. Please contact a retailer or your community for the nearest collection center.



The power adapter is intended for use at supply voltages with fluctuations not exceeding +/-10% and classified as overvoltage category II.



Mounting

AirImage 2.0 can be mounted on the wall with screws, racking with cable ties or freestanding on a flat surface.



Position recommendations:

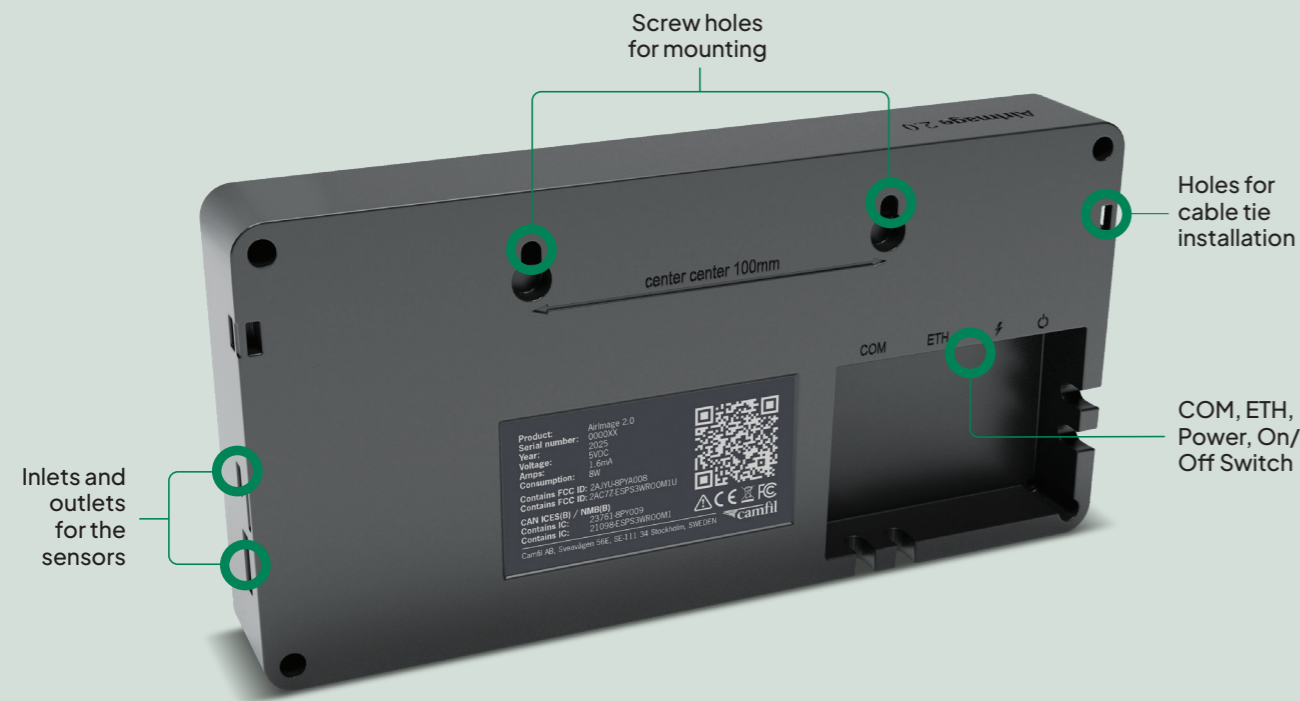
- Place the AirImage 2.0 in the same room as the connected devices for the best outcome.
- Ensure the AirImage 2.0 has a strong 4G signal in its position, check for the 4G logo and small arrows on the home screen for reassurance.
- Avoid having thick walls or shelves between the AirImage 2.0 and the connected devices. Please leave the measurement openings clear.

On a wall:

To mount the AirImage on a wall, use screws 100 mm (4 inches) apart, and use the case recesses on the rear to mount.

Cable ties to a shelf:

If you wish to mount to racking, holes for cable ties are on the rear case – left and right sides at the top.



Technical information

System

Dimensions	245 x 124 x 32 mm
Display	7" LED touch screen
Power supply	USB-C, 5V, 10W, min 1.5A
Nominal voltage	3.7V

Sensor specification

PM Sensor

Mass concentration range	0 to 1000 µg/m ³
Mass concentration precision	(PM1, PM2.5): ±10%
Particle size range	PM1.0, PM2.5, PM4*, PM10* (*calculated by algorithm)

CO₂

Measurement range	400 - 2000ppm
Accuracy baseline	±50 ppm

Humidity

Typ. relative humidity accuracy	6% RH
Operating relative humidity range	0-95% RH

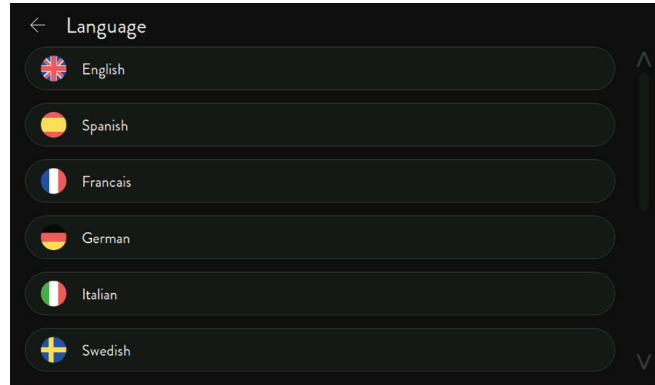
Temperature

Typ. temperature accuracy	0.8°C
Operating temperature range (°C)	10 - 40°C

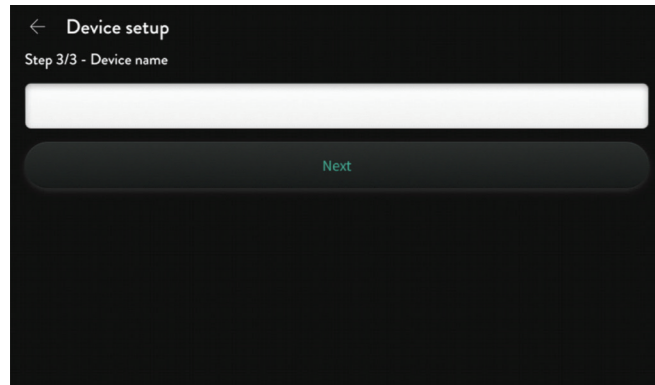
Communication

Sim modem	External 4G to send data to Cloud
Wifi mesh	Range min. 50 m communication with CamCleaner

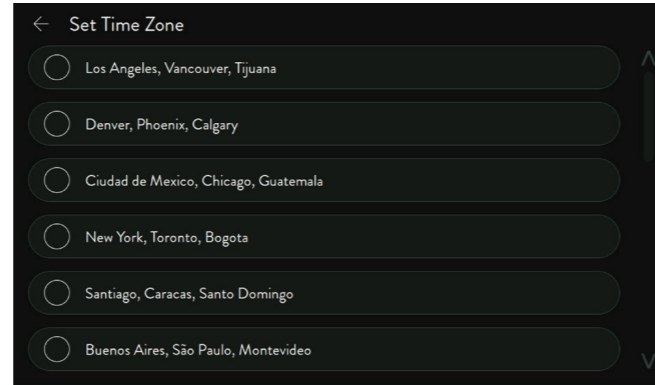
Set-up



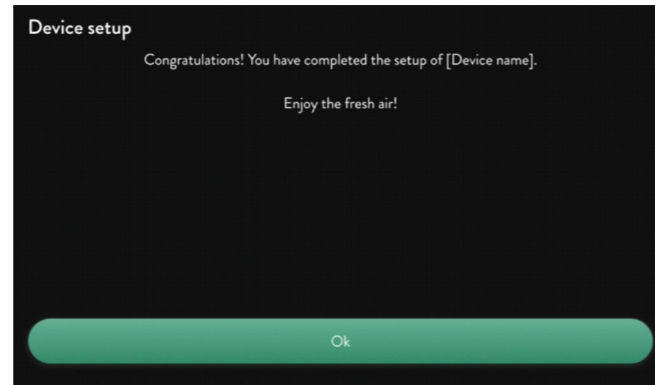
1. Select language



3. Name your device (optional)



2. Set your time zone



4. Done!



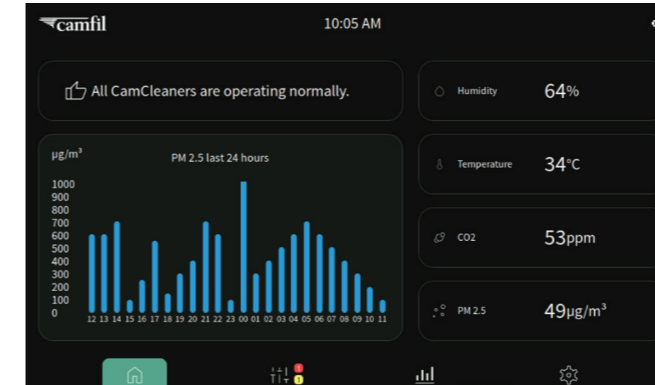
Link the first CamCleaner:

Requirements:
Direct access to the Airlmage 2.0 and the CamCleaner you want to Link.

Steps:

- Go into the Airlmage 2.0's CamCleaner Control screen and click on "Link unit".
- Press "Link with Airlmage 2.0" on the CamCleaner settings screen.
- The linking process stops automatically when they are connected. Find the linked CamCleaner on the Airlmage 2.0's CamCleaner control screen. The CamCleaner can now be automatically controlled by the Airlmage 2.0.

Screen views

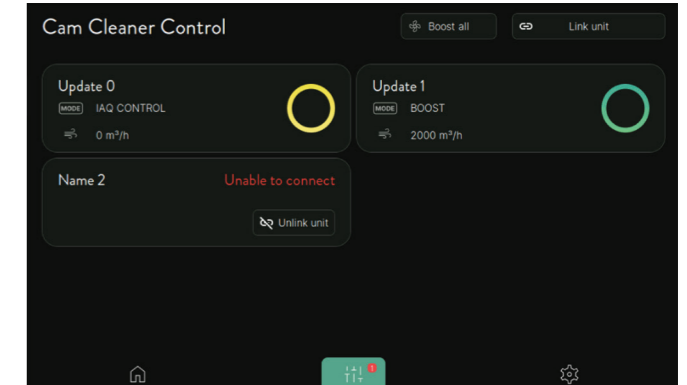


Home screen

Error Messages: Error messages from connected CamCleaners
Display of live and historic data: The graph to display can be selected in settings

Menu bar for accessing Airlmage functions

- **CamCleaner Control:** Connect and control CamCleaners
- **Statistics:** Graphs of PM2.5 over different time periods, as well as IAQ facts
- **Settings:** Change settings including for Schedule and IAQ control modes

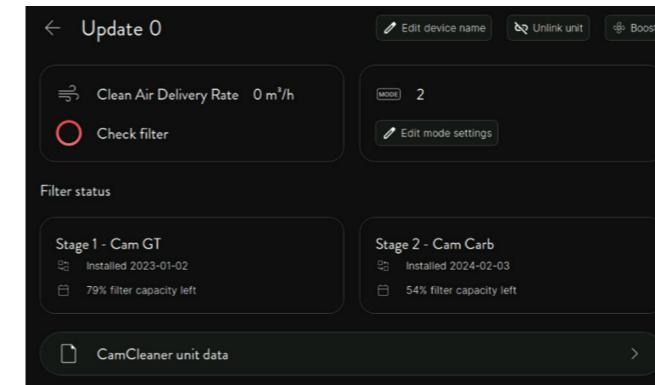


CamCleaner control screen

Monitor all your connected devices as they display their Airflow, Control mode and Status

Link your Device to the Airlmage: Press the "Link unit" button on the top of the screen, press the "Link with Airlmage 2.0" button on the Settings screen of the CamCleaner you want to link.

CamCleaner Control & Information: Click on one of the connected devices to select the control mode and receive more information about the device, like filter capacity left or the unit data



Individual CamCleaner control screen

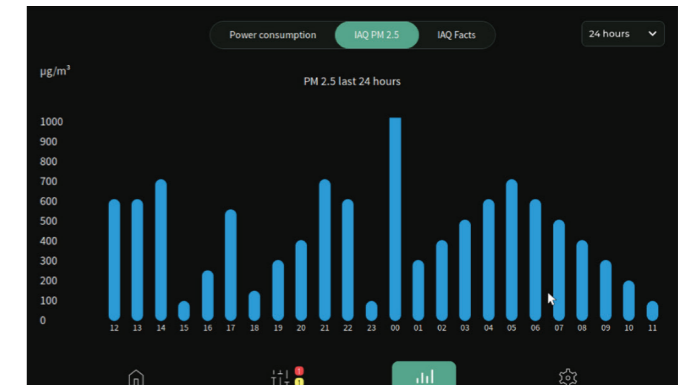
Airflow and Alarms are displayed

Control mode is displayed and can be changed by pressing **Edit mode settings**. Select IAQ control, Fan speed (1-6) or Schedule. Settings for IAQ control and schedule can be accessed directly or from the settings screen.

IAQ Control: All connected CamCleaners will automatically turn on as soon as your air quality exceeds your target of PM2.5 in µg/m³, to ensure good Air Quality (default is 85 µg/m³).

Fan Speed: Select the airflow level for your fan, from 1 to 6. The airflow will be maintained even with a drop in filter capacity. The setpoints will depend on the CamCleaner model, see the Technical Specification of the CamCleaner manual for more details.

Schedule Control: You can set up to three schedules in the settings (choose end and start time, fan speed, and repetition days). A vacation schedule can also be set.



Statistics

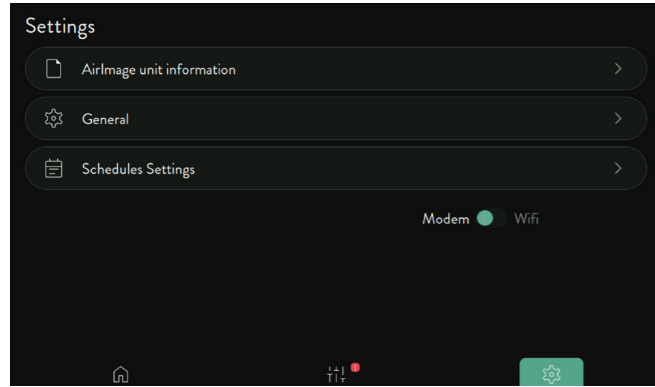
This displays historic PM2.5 values.

Select the time period you wish to display.

- 2 hours
- 24 hours
- Days
- Months
- Years

IAQ facts can also be accessed, giving the volume of clean air delivered and weight of harmful particles removed daily, monthly, yearly and the totals.

Settings



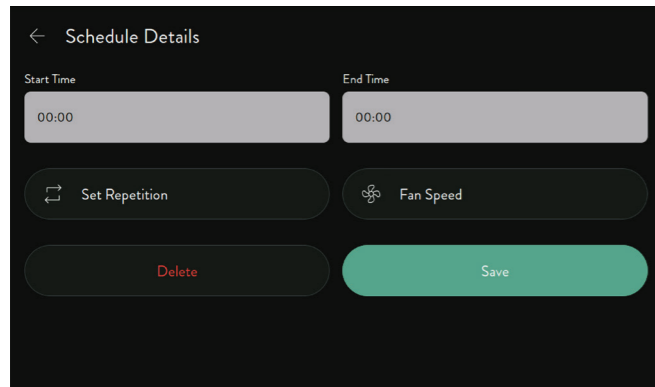
Settings menu

AirImage unit information: detailed information about the device

General settings: Language, Time zone, Lock, Screen saver, Brightness, Units, Factory reset

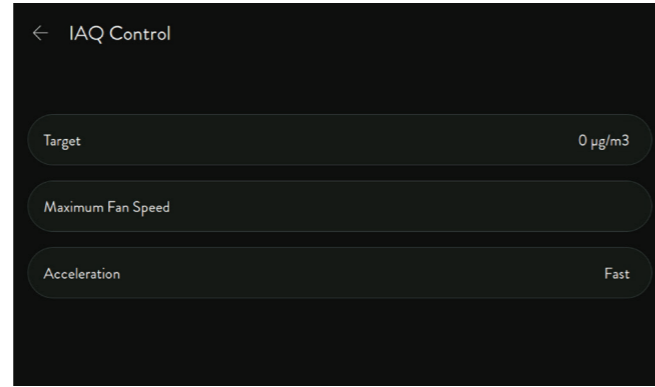
IAQ control settings: Change the settings for IAQ control from the default

Schedule settings: Create a personalised schedule for your CamCleaners



Schedule settings

Add Schedule: Personalise up to three schedules in the settings



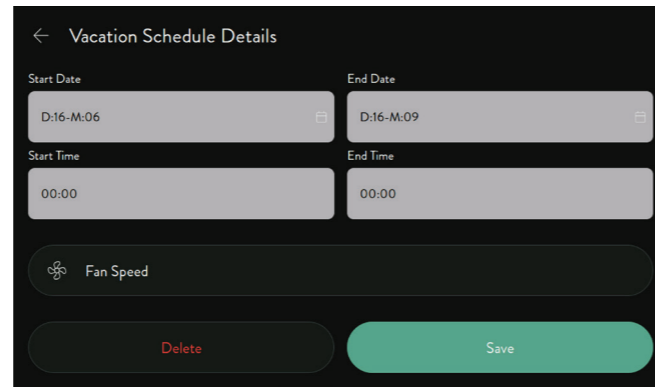
IAQ control settings

The settings can be changed for IAQ control

Target: PM 2.5 value the AirImage 2.0 will control the CCXs to achieve

Maximum fan speed: The maximum fan speed / airflow the connected cam cleaners will use to control the PM 2.5 value.

Acceleration: How quickly or slowly the fan ramps up



Vacation schedule

Add Vacation Schedule: The vacation schedule feature allows you to automate your fan's operation during a specific time period.

Choose the end and start time, the repetition (which days) and the fan speed you want the unit to operate at.

Login to the MyCamfilConnect portal to use the whole potential of the AirImage 2.0

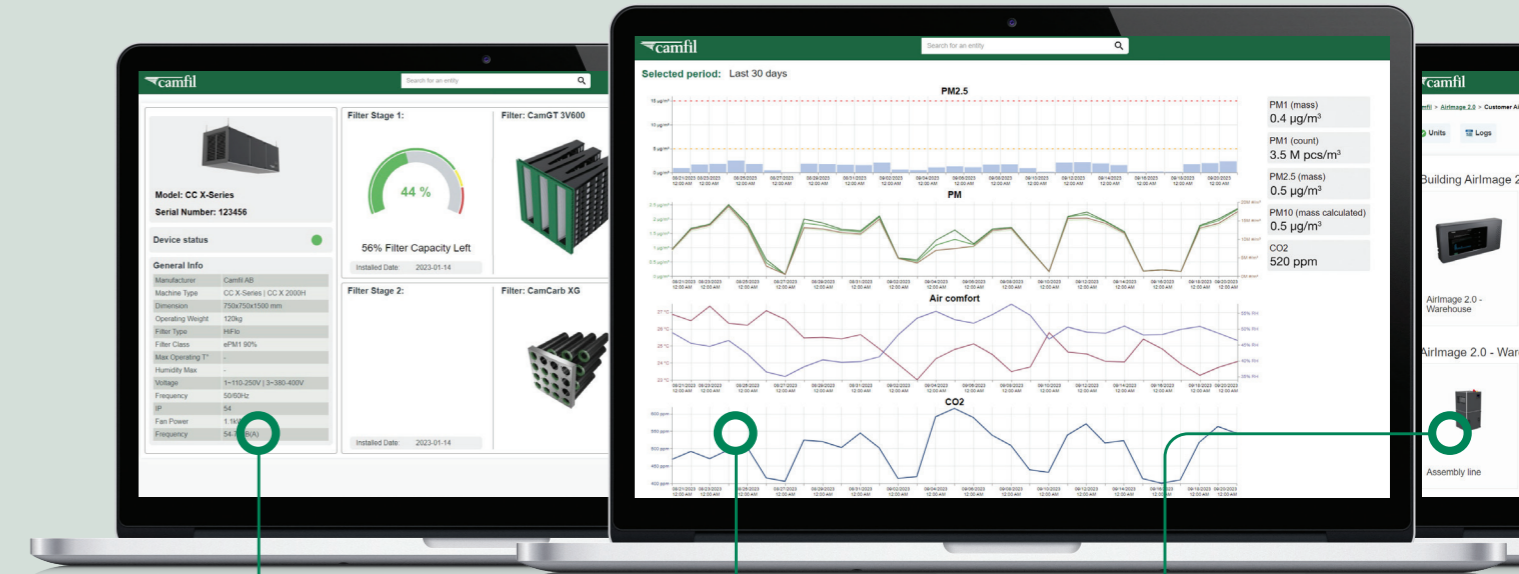
Historic PM, temperature, humidity and CO₂ values can be analysed. Detailed information on your connected CamCleaners are available, including filter lifetime, pressure drops and machine status.

The AirImage 2.0 sends all the data to the cloud, which you can view on the IoT portal. Tracking this historical data is crucial as it can help or influence future decisions. Additionally, you can monitor the status of your filters and set up notifications for when filters need to be replaced or other issues occur.

To access more data and for increased insight in to your IAQ and CamCleaners, subscribe to MyCamfilConnect.



Log in/create account:
<https://portal.camfil.com/> or the QR code. Register your device following the on screen instructions.



Track your CC X-Series devices

- Monitor filter status
- Set notifications
- Easy to understand interface

Historical data overview

- View historical data
- Track improvements
- Identify possible changes in your process for quality control purposes

Overview of your devices

- Easy access to all your installed devices

Maintenance

Cleaning

Clean your Airlmage 2.0 immediately if it comes in contact with anything that might cause stains or other damage, for example dirt or sand, ink, soap, detergent etc.

Follow these guidelines for cleaning:

- Unplug all cables and turn off your Airlmage 2.0
- Use a soft, slightly damp, lint-free cloth, for example, a lens cloth
- Avoid getting moisture in openings
- Don't use aggressive cleaning products that attack paint or plastic
- Don't use compressed air
- Please **DO NOT** clean the sensors

Service and repair

Do not open the device. In case of defect or damage, please send back the device to Camfil service. Please contact your local Camfil office at: <https://www.camfil.com/en-us/support-and-services/support/contact-locator>

Firmware update:

The Airlmage 2.0 has the latest firmware, however, Camfil may send Software Updates for security or improvement reasons. The Airlmage will be updated automatically by Camfil, as long as it is connected by 4G or wifi. The Airlmage will operate normally during the updating process, however, the Airlmage may need to be set-up again after a major update. If CamCleaners were connected, they may need to be reconnected. The air quality data will still be available.

Link to the support pages and manual.



Troubleshooting

There is no "Link Airlmage" button on your CC-X?

To link a CC-X to an Airlmage 2.0, ensure it's set to operate with an Airlmage 2.0. If not, perform a factory reset and set it up accordingly. You can link it during the setup process, and the button will appear in the settings.

The linking process between the Airlmage 2.0 and the CamCleaner started but they don't connect?

If a CamCleaner was disconnected from an Airlmage 2.0 without being unlinked and you're trying to connect it to a different Airlmage 2.0, this issue can occur. To resolve it, perform a factory reset on your CamCleaner, then connect it to your Airlmage 2.0.

Being too far away or having obstacles like thick walls or big shelves between the CamCleaner and the Airlmage 2.0 can affect the connection negatively. Try moving them closer together and avoid any obstacles.

I can't set my CamCleaner on the Schedule or IAQ control:

Before using the schedule or IAQ control, it is necessary to pre-set them in the settings (⚙️) under Schedule or IAQ settings.

Manufacturer's declaration of conformity

See separate appendix.



Guarantees and undertakings

Camfil warrants that the Airlmage 2.0 sensor system will be free from defects in materials and workmanship under normal use and service for a period of one (1) year from the date of original purchase.

This warranty is strictly limited to the repair or replacement of the product, at Camfil's sole discretion. The warranty is not transferable and applies only to the original business purchaser.

Warranty Exclusions and Conditions

This limited warranty does not cover:

- **Consumable Parts:** Normal wear and tear of consumable components, including but not limited to particle sensors.
- **Improper Use:** Any damage, failure, or defect caused by improper installation, maintenance, or operation outside of the guidelines specified in this manual.
- **Unauthorized Modifications:** Any modifications, repairs, or service performed by personnel not authorized by Camfil.
- **External Factors:** Damage resulting from accidents, abuse, neglect, power surges, or acts of nature.

- **Third-Party Equipment:** Any defects or failures arising from the use of third-party components or accessories not approved by Camfil.

To initiate a warranty claim, the business purchaser must notify Camfil in writing within the warranty period and provide proof of purchase, a serial number, and a detailed description of the defect.

Limitation of Liability

Camfil's total liability for any and all claims, whether in contract, tort, or otherwise, arising out of or related to this product, shall not exceed the price paid by the business purchaser for the product.

Camfil shall not be liable for any indirect, incidental, special, or consequential damages, including but not limited to lost profits, loss of data, loss of business, or any other commercial losses, even if Camfil has been advised of the possibility of such damages. This limitation of liability is a fundamental element of the basis of the bargain between the parties.

Disclaimer of liability

Camfil makes every effort to ensure the accuracy and completeness of the information contained in this user manual. However, Camfil assumes no responsibility for errors or omissions.

The information in this manual is subject to change without notice. Camfil reserves the right to make changes in design or components as progress in engineering and manufacturing may warrant.

In no event shall Camfil be liable for any direct, indirect, incidental, special, or consequential damages arising out of or in any way connected with the use of this product or this manual, including but not limited to damages for loss of profits, business interruption, or loss of information.

NOTICE:

This device complies with Part 15 of the FCC Rules and contains license-exempt transmitter(s)/receiver(s) that comply with Innovation, Science and Economic Development Canada's licence-exempt RSS standard(s).

Operation is subject to the following two conditions:

- (1) this device may not cause harmful interference, and
- (2) this device must accept any interference received, including interference that may cause undesired operation.

L'émetteur/récepteur exempt de licence contenu dans le présent appareil est conforme aux CNR d'Innovation, Sciences et Développement économique Canada applicables aux appareils radio exempts de licence.

L'exploitation est autorisée aux deux conditions suivantes:

- (1) l'appareil ne doit pas produire de brouillage, et
- (2) l'appareil doit accepter tout brouillage radioélectrique subi, même si le brouillage est susceptible d'en compromettre le fonctionnement.

NOTICE:

Changes or modifications made to this equipment not expressly approved by Camfil AB may void the FCC authorization to operate this equipment.

Radiofrequency radiation exposure Information:

This equipment complies with FCC and IC radiation exposure limits set forth for an uncontrolled environment. When plugged in this equipment should be installed and operated with minimum distance of 20cm between the radiator and your body. When used in battery mode, there is no restriction on the distance between the radiator and your body. This transmitter must not be co-located or operating in conjunction with any other antenna or transmitter.

Cet équipement est conforme aux limites d'exposition aux rayonnements IC établies pour un environnement non contrôlé. Cet équipement doit être installé et utilisé avec un minimum de 20 cm de distance entre la source de rayonnement et votre corps. Ce transmetteur ne doit pas être placé au même endroit ou utilisé simultanément avec un autre transmetteur ou antenne.





Camfil – a global leader in air filters and clean air solutions.

For more than half a century, Camfil has been helping people breathe cleaner air. As a leading manufacturer of premium clean air solutions, we provide commercial and industrial systems for air filtration and air pollution control that improve worker and equipment productivity, minimise energy use, and benefit human health and the environment.

**To discover how Camfil can help you to protect people,
processes and the environment, visit us at camfil.com**